

Single and Dual Goosenecks

Flexible obedient, incident illumination for space constrained applications.



Single Chrome Gooseneck, A08400



Dual Black Gooseneck, A08575

Bundle Input: Black Anodized Aluminium
 Bundle Sheathing: Chrome or Black Decabon

Product and Performance Characteristics

- Made with chrome plated semi-obedient metal or black decabon semi-rigid gooseneck tubing
- Easily adjustable, precise positioning offers complete control of light placement
- Dual models illuminate workspace with a single light source
- Gooseneck legs placed in opposing positions create near shadow-free illumination
- Standard output ferrules accept spot lenses and polarizing caps (See the Accessories section)
- Model number A08575 is a dual focusing gooseneck that has permanently attached spot lenses, easily focused by turning the knurled lens barrels
- Modified standard and custom configurations are available

Single Gooseneck Specifications

Part No.	Tubing	Distal Ferrule Diameter	Active Input Fiber Diameter	Gooseneck Tubing Diameter	Gooseneck Length
A08400	Chrome	.20" (5)	.393" (10)	.47" (12)	18" (457)
A08410	Black	.20" (5)	.393" (10)	.47" (12)	30" (762)

Dual Gooseneck Specifications

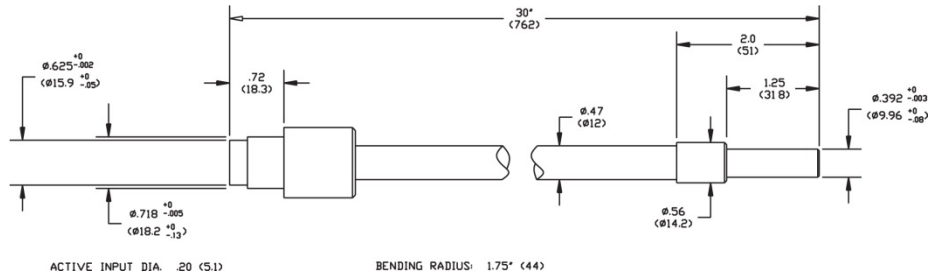
Part No.	Tubing	Distal Ferrule Diameter	Active Input Fiber Diameter	Gooseneck Tubing Diameter	Gooseneck Length
A08500	Chrome	.30" (8)	.393" (10)	.47" (12)	18"(457)
A08575	Black	.30" (8)	.21" (5)	.47" (12)	23" (584)

Dimensions in () are in mm

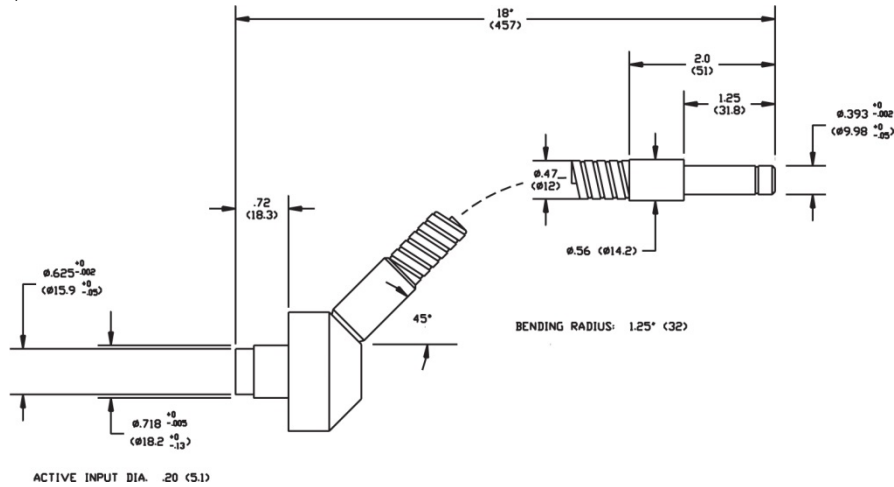
Version 01.2017



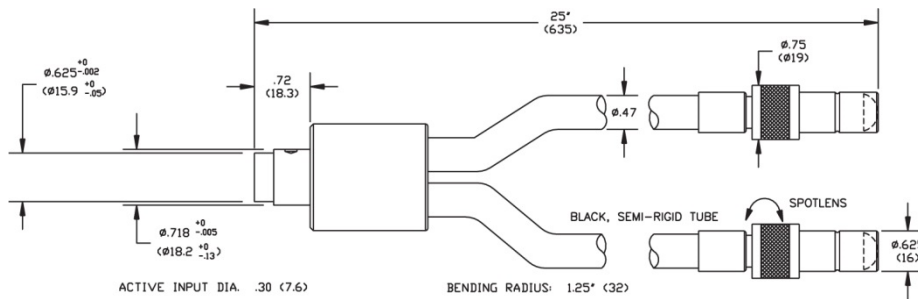
Gooseneck Specifications



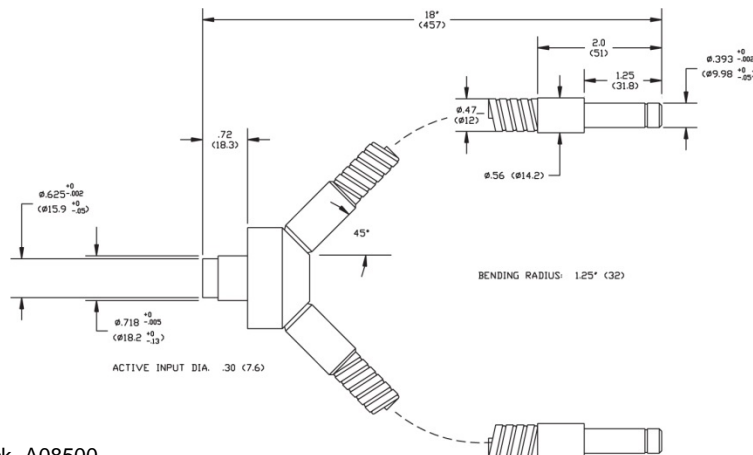
Single Black Gooseneck, A08410



Single Chrome Gooseneck, A08400



Dual Black Gooseneck, A08575



Dimensions in () are in mm

Warning : This product is manufactured with glass fiber. Not for use in cable/hose carrier. Call SCHOTT to discuss moving cable/hose carrier applications.

Dual Chrome Gooseneck, A08500

Lighting and Imaging
SCHOTT North America, Inc.
 122 Charlton Street
 Southbridge, MA 01550
 USA

Phone: +1 (508) 765-9744
 Fax: +1 (508) 765-1299
 lightingimaging@us.schott.com
 www.us.schott.com/lightingimaging

All specifications are subject to change without prior notice. This datasheet or any extracts thereof may only be used in other publications with express permission of SCHOTT. © SCHOTT North America, Inc.

SCHOTT
 glass made of ideas